

Dealer/User Information				Owner's Name				
Marine Service snc di Tommaseo (703637)				Massimo Dasti				
Via Ampere 6								
Settimo Milanese , MI 20019 ITALY								
Serial No	Model No	Eng Hours	Max RPM	Max Tmp (port)	Max Tmp (stbd)	Start Cycles	Steering	Trans Pos
5219524	E115DPLSCR	186:10:31	5741	93.9 °C	89 °C	641	Remote	0
EMM Serial No	EMM Date Code	EMM Hours	Diag Ver	EMM Max Tmp	Map Soft Ver	Map Soft Rev	PDC Ver	
1001067	2411G	1:38:36	41122	81.2 °C	3030393	2680	m8v49128	
Break-In Time	Oil Ratio	No Oil Time	TPS Cal	Timing OffSet	Boat Length		Boat Material	Hull Type
Completed	XD100	00:15:45	197	-1 btd				
Has ICON	Mfg Data Info	Engine Family ID						
No	4431	offline						

Current Engine Faults

Code | Description

No active faults found...

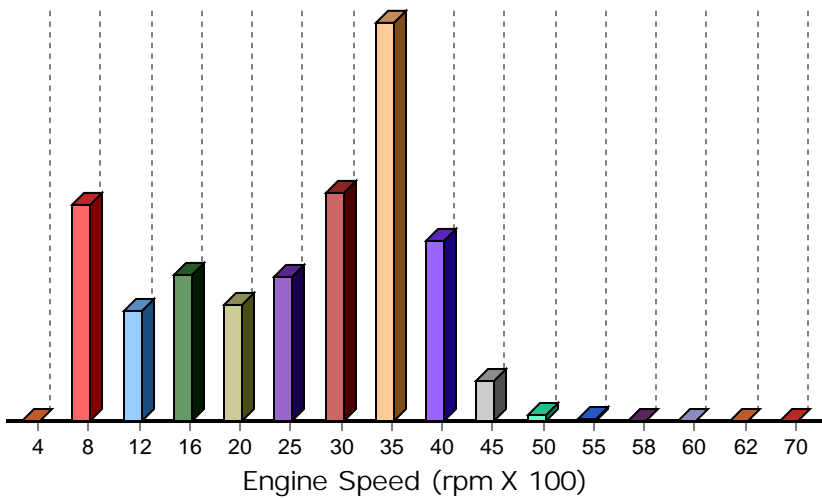
Occurred Engine Faults

Code	Times	First	Last	Description	Legend: First = Hrs:Mins, Last = Hrs:Mins
38	1	99:56	99:57	Oil Pressure Feedback NOT Detected	

Historical Engine Faults

Code	Times	Last	Description	Legend: Last = Hrs
38	5	99	Oil Pressure Feedback NOT Detected	
25	1	6	EMM Temperature ABOVE Range	
97	1	98	Intermittent Switched (B+) Detected	

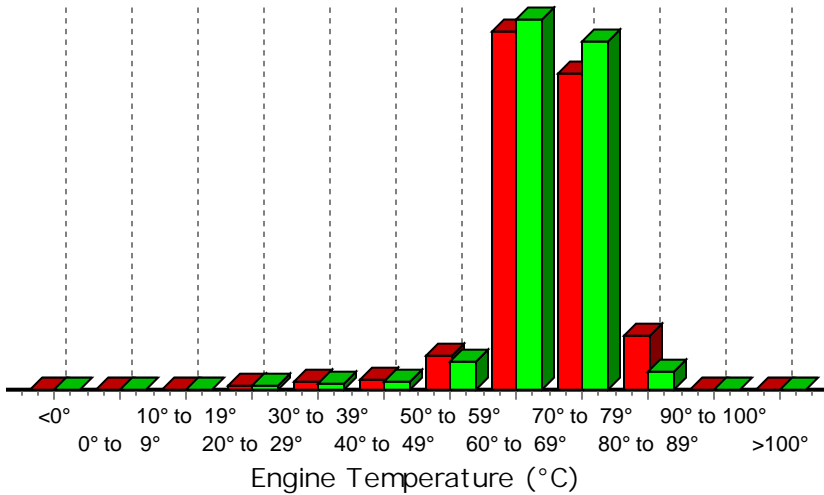
Engine Speed Profile



Eng Max Speed = 5741

RPM Range =	Value	%
0- 400 =	72	0.0
401- 800 =	88145	13.6
801-1200 =	45190	7.0
1201-1600 =	59875	9.3
1601-2000 =	46910	7.3
2001-2500 =	58607	9.1
2501-3000 =	92934	14.4
3001-3500 =	162111	25.1
3501-4000 =	73458	11.4
4001-4500 =	15925	2.5
4501-5000 =	2315	0.4
5001-5500 =	1082	0.2
5501-5800 =	199	0.0
5801-6000 =	2	0.0
6001-6200 =	4	0.0
6201-7000 =	0	0.0
Time (secs) =	646829	

Engine Temperature Profile (Red = Port, Green = Stbd)

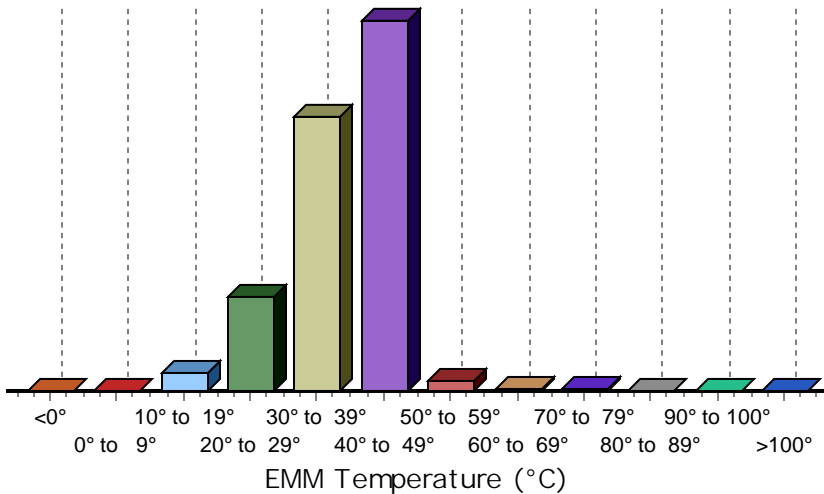


Port Max Temp = 93.9 °C
Stbd Max Temp = 89 °C
Temp Range °C =

Temp Range °C	Port	Stbd
<0°	0	0
0° to 9°	55	40
10° to 19°	470	356
20° to 29°	3721	3052
30° to 39°	5858	5063
40° to 49°	8341	6825
50° to 59°	28029	22860
60° to 69°	294833	305498
70° to 79°	260410	288082
80° to 89°	44504	14935
90° to 100°	488	0
>100°	0	0

Time (secs) = 646709 / 646711

EMM Temperature Profile



EMM Max Temp = 81.2 °C
Temp Range °C =

Temp Range °C	Value	%
<0°	0	0.0
0° to 9°	134	0.0
10° to 19°	17199	2.3
20° to 29°	92593	12.1
30° to 39°	271324	35.5
40° to 49°	367354	48.1
50° to 59°	10353	1.4
60° to 69°	2248	0.3
70° to 79°	2687	0.4
80° to 89°	76	0.0
90° to 100°	0	0.0
>100°	0	0.0

Time (secs) = 763968

Serial Number: 07281060011820

Cyl #	FF[1]	FF[2]	FF[3]	FF[4]	FF[5]	FF[6]	FF[7]	FF[8]	A[0]	B[0]	Pressure
1	4	6	8	10	15	25	40	55	0	500	0
	PW[1]	PW[2]	PW[3]	PW[4]	PW[5]	PW[6]	PW[7]	PW[8]	A[1]	B[1]	Delay
	899	1002	1104	1206	1461	1933	2624	3335	200	250	1328
1	DLY[1]	DLY[2]	DLY[3]	DLY[4]	PWD[1]	PWD[2]	PWD[3]	PWD[4]	A[2]	B[2]	Cycles
	0	0	0	0	1000	2000	3000	3500	200	450	103

Serial Number: 07278030217820

Cyl #	FF[1]	FF[2]	FF[3]	FF[4]	FF[5]	FF[6]	FF[7]	FF[8]	A[0]	B[0]	Pressure
2	4	6	8	10	15	25	40	55	0	500	0
	PW[1]	PW[2]	PW[3]	PW[4]	PW[5]	PW[6]	PW[7]	PW[8]	A[1]	B[1]	Delay
	856	966	1065	1164	1417	1898	2595	3303	200	250	1281
2	DLY[1]	DLY[2]	DLY[3]	DLY[4]	PWD[1]	PWD[2]	PWD[3]	PWD[4]	A[2]	B[2]	Cycles
	0	0	0	0	1000	2000	3000	3500	200	450	103

Serial Number: 07281030006820

Cyl #	FF[1]	FF[2]	FF[3]	FF[4]	FF[5]	FF[6]	FF[7]	FF[8]	A[0]	B[0]	Pressure
3	4	6	8	10	15	25	40	55	0	500	0
	PW[1]	PW[2]	PW[3]	PW[4]	PW[5]	PW[6]	PW[7]	PW[8]	A[1]	B[1]	Delay
	914	994	1102	1199	1442	1913	2619	3335	200	250	1297
	DLY[1]	DLY[2]	DLY[3]	DLY[4]	PWD[1]	PWD[2]	PWD[3]	PWD[4]	A[2]	B[2]	Cycles
	0	0	0	0	1000	2000	3000	3500	200	450	103

Serial Number: 07278030214820

Cyl #	FF[1]	FF[2]	FF[3]	FF[4]	FF[5]	FF[6]	FF[7]	FF[8]	A[0]	B[0]	Pressure
4	4	6	8	10	15	25	40	55	0	500	0
	PW[1]	PW[2]	PW[3]	PW[4]	PW[5]	PW[6]	PW[7]	PW[8]	A[1]	B[1]	Delay
	860	974	1078	1175	1414	1879	2576	3288	200	250	1229
	DLY[1]	DLY[2]	DLY[3]	DLY[4]	PWD[1]	PWD[2]	PWD[3]	PWD[4]	A[2]	B[2]	Cycles
	0	0	0	0	1000	2000	3000	3500	200	450	103

Comments

Initial engine history record.